

# Improviser ! - tome 1

codage du numéro d'image : 'tome', 'page', 'image'

donc : 1.2.3 = tome 1, page 2, image 3

Exercise 1.10.1: A musical staff in 4/4 time with a key signature of one sharp (F#). The first two beats are marked with 'downbeat' arrows. The melody consists of quarter notes: D4, E4, F#4, G4, A4, B4, C5, B4, A4, G4, F#4, E4, D4.

1.10.1

Exercise 1.11.1: A musical staff in 4/4 time with a key signature of one sharp (F#). The melody consists of quarter notes: D4, E4, F#4, G4, A4, B4, C5, B4, A4, G4, F#4, E4, D4.

1.11.1

Exercise 1.11.2: A musical staff in 4/4 time with a key signature of one sharp (F#). The melody consists of quarter notes: D4, E4, F#4, G4, A4, B4, C5, B4, A4, G4, F#4, E4, D4.

1.11.2

Exercise 1.11.3: A musical staff in 4/4 time with a key signature of one sharp (F#). The melody consists of quarter notes: D4, E4, F#4, G4, A4, B4, C5, B4, A4, G4, F#4, E4, D4. Dynamics markings *p*, *f*, and *ff* are placed under the notes.

1.11.3

Exercise 1.12.1: A musical staff in 4/4 time with a key signature of one sharp (F#). The melody consists of quarter notes: D4, E4, F#4, G4, A4, B4, C5, B4, A4, G4, F#4, E4, D4.

1.12.1

Exercise 1.12.2: A musical staff in 4/4 time with a key signature of one sharp (F#). The melody is divided into four phrases: Phrase 1 (question), Phrase 2 (réponse), Phrase 3 (question), and Phrase 4 (réponse). The notes are: D4, E4, F#4, G4, A4, B4, C5, B4, A4, G4, F#4, E4, D4.

1.12.2

Exercise 1.17.1 (left): A musical staff in 4/4 time with a key signature of one sharp (F#). The melody consists of quarter notes: D4, E4, F#4, G4, A4, B4, C5, B4, A4, G4, F#4, E4, D4. The notes are numbered 1 to 4.

1.17.1

Exercise 1.17.1 (right): A musical staff in 4/4 time with a key signature of one sharp (F#). The melody consists of quarter notes: D4, E4, F#4, G4, A4, B4, C5, B4, A4, G4, F#4, E4, D4. The notes are numbered 1 to 3.

Exercise 1.19.1: A musical staff in 4/4 time with a key signature of one sharp (F#). The melody consists of quarter notes: D4, E4, F#4, G4, A4, B4, C5, B4, A4, G4, F#4, E4, D4. The intervals between notes are labeled: octave, tierce M, seconde M, quarte juste, seconde M, and quinte juste.

1.19.1

1.24.1

1.25.1

état fondamental      1er renversement      2e renversement

D      D/F#      D/A

1.26.1

nom      intervalles      nom      intervalles      nom      intervalles

1.27.1

état fondamental      1er renversement      2e renversement

(accord de sixte)      (accord de quarte sixte)

1.27.2

état fondamental      1er renversement      2e renversement

(accord de sixte)      (accord de quarte sixte)

1.28.1

état fondamental      1er renversement      2e renversement

(accord de sixte)      (accord de quarte sixte)

1.28.2



D G E- A D

I IV II V I

1.40.2

I IV I IV I II V I

1.42.1

1.43.1

D G Asus<sup>4</sup> D

1.44.1

I pentatonique majeure IV pentatonique majeure V pentatonique majeure

1.44.2

D I pentatonique G IV pentatonique A V pentatonique D

1.44.3

E- ou G A D

II ou IV V pentatonique V pentatonique I V pentatonique

1.45.1

1.46.1



1.46.2 / 1.48.1

D- E° F(#5) G- A Bb C#° D-

I II III IV V VI VII I

1.47.1

D- Em F(#5) G A B° C#° D-

I II III IV V VI VII I

1.47.2

D- G- E° A D-

I IV II V I

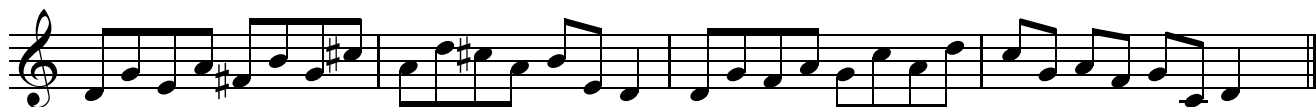
D- G- E° A D-

I IV II V I

1.48.2

D- G- E° A D-

1.49.1



1.49.2

D

A pentatonique

F

C pentatonique

Bb

F pentatonique

Eb

Bb pentatonique

A pentatonique

1.51.1

Dm

D mineur pentatonique

Bbm

Bb mineur pentatonique

F#m

F# mineur pentatonique

D mineur pentatonique

1.52.1

Dm

D mineur pentatonique

Bbm

Bb mineur pentatonique

F#m

F# mineur pentatonique

D mineur pentatonique

1.53.1

1 **couplet** I VI III  $\flat$ VII

I VI III  $\flat$ VII

**refrain** IV VI III  $\flat$ VII

VI  $\flat$ VII III  $\flat$ VII/II I

VI  $\flat$ VII III  $\flat$ VII/II I **Fine**

D.C. al Fine

1.56.1

E- C G D

I pent. min. gamme E- I pent. min. IV pent. min.

gamme E-

1.58.1

**couplet**

Four measures of chords: F#- B, C#- B, F#- B, C#- B.

Four measures of chords: F#- B, C#- B, F#- B, C#- B.

**refrain**

Four measures of chords: F#- B, C#- B, F#- B, C#- B.

**Fine**

**D.C.**

**pont**

Four measures of chords: E, B, C#-, G#.

Four measures of chords: A, B, C°, C#-.

**D.C. al Fine**

1.61.1

**couplet**

tonalité: C#- F#- B C#- B F#- B C#- B

IV pent. min. V pent. min. I pent. min. gamme C# min.

V pent. min. 1er 5 notes gamme C#- gamme C# min.

1.62.1



etc. jusqu'à la fondamentale D

D G C F B $\flat$  E $\flat$  A $\flat$  D $\flat$

I IV I IV I IV I IV

etc. jusqu'à la fondamentale C#

C# F# B E A D G C

I IV I IV I IV I IV

1.68.1

D G C F

B $\flat$  E $\flat$  A $\flat$  C#

F# B E A


1.69.1

gamme D majeur


gamme B mineur (la gamme relative de D majeur)

1.70.1


Pentatonique majeure



pentatonique mineure



pentatonique mineure



D B Em A D

A pent. majeure B pent. majeure A pent. majeure

G pent. majeure A pent. majeure

1.70.2