

Improviseren!

deel 2

B♭ versie

Fran Schreuder

Improviseren! - deel 2

afbeeldingsnummer bestaat uit 'boek', 'pagina', 'afbeelding'
 dus: 1.2.3 = boek 1, pagina 2, afbeelding 3



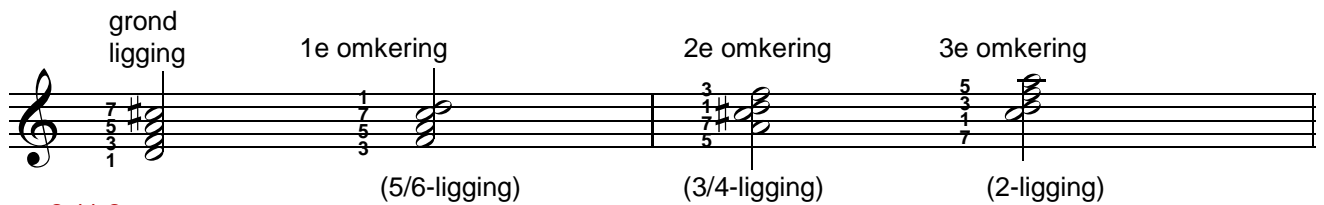
2.10.1



2.10.2



2.11.1



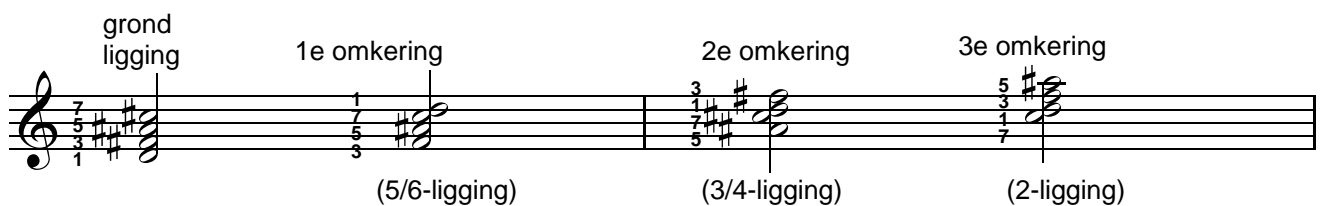
2.11.2



2.12.1



2.12.2



2.12.3

grond ligging 1e omkering 2e omkering 3e omkering

(5/6-ligging) (3/4-ligging) (2-ligging)

2.13.1

grond ligging 1e omkering 2e omkering 3e omkering

2.13.2

grond ligging 1e omkering 2e omkering 3e omkering

(5/6-ligging) (3/4-ligging) (2-ligging)

2.14.1

grond ligging 1e omkering 2e omkering 3e omkering

(5/6-ligging) (3/4-ligging) (2-ligging)

2.14.2

grond ligging 1e omkering 2e omkering 3e omkering

(5/6-ligging) (3/4-ligging) (2-ligging)

2.14.3

grond ligging 1e omkering 2e omkering 3e omkering

2.15.1

D Δ E⁻⁷ F^{#-7} G Δ A⁷ B⁻⁷ C^{#ø} D Δ

I II III IV V VI VII I

2.15.2

B⁻⁷ E⁻⁷ A⁷ D^Δ G^Δ D^Δ A⁷ D^Δ

VI II V I IV I V I

2.16.1

D^{-Δ} E[∅] F^Δ G⁻⁷ A⁷ B^{bΔ} C^{#∅} D^{-Δ}

I II III IV V VI VII I

2.17.1

B^{bΔ} E[∅] A⁷ D^{-Δ} G⁻⁷ D^{-Δ} A⁷ D^{-Δ}

VI II V I IV I V I

2.17.2

1 b3 4 #4 5 b7

2.18.1

I⁷ IV⁷ I⁷ I⁷

D⁷ G⁷ D⁷ D⁷

IV⁷ IV⁷ I⁷ I⁷

G⁷ G⁷ D⁷ D⁷

V IV⁷ I⁷ I⁷ (V)

A⁷ G⁷ D⁷ D⁷ (A⁷)

2.22.1

$D\Delta^9$ $E-7(9)$ $F\#-7(b9b6)$ $G\Delta^9\#11$ $A7(9)$ $B-7(9)$ $C\#\emptyset b6b9$ $D\Delta^9$

I II III IV V VI VII I

2.23.1

I^7 IV^7 I^7 $(II \quad V)^{IV}$

D^7 G^7 D^7 $A-^7 \quad D^7$

IV^7 IV^7 I^7 VI^7

G^7 G^7 D^7 B^7

II V I^7 $(VI^7$ II $V)$

$E-^7$ A^7 D^7 $(B^7$ $E-^7$ $A^7)$:||

2.24.1

$I-^7$ IV $I-^7$ $(II^\emptyset \quad V)^{IV}$

$D-^7$ $G-^7$ $D-^7$ $A^\emptyset \quad D^7$

IV IV $I-^7$ VI

$G-^7$ $G-^7$ $D-^7$ Bb^Δ

II V $I-^7$ $(VI$ II $V)$

F^\emptyset A^7 $D-^7$ $(Bb^\Delta$ F^\emptyset $A^7)$:||

2.25.1

A

1 I (V)^{VI}

5 VI⁷ of (V)^{II} II

9 (V)^{VI} VI

13 II⁷ II V

B

17 I (V)^{VI}

21 VI⁷ of (V)^{II} II

25 IV IV-⁶ III VI⁷ of (V)^{II}

29 II V I (II V)

2.26.1

1 **A** D⁶ F#⁷

D majeur B mineur + leidtoon

B⁷ E⁻⁷

E mineur E majeur D majeur

F#⁷ B⁻⁷

B mineur + leidtoon D majeur

E⁷ E⁻⁷ A⁷

A majeur D majeur

2.28.1

1 3 5 7 9 11 13

2.31.1

2.32.1

D Δ ⁹ E-7(9) F#-7(b9) (b6) G Δ ⁹(#11) A⁹ B-7(9) C#⁷(b9) (b6) D Δ ⁹

I II III IV V VI VII I

2.36.1

B-7(9) E-7(9) A7(9) D Δ (9) G Δ (9) D Δ (9) A7(9) D Δ (9)

VI II V I IV I V I

2.38.1

B-7(9) E-7(9) A7(9) D Δ (9) G Δ (9) D Δ (9) A7(9) D Δ (9)

VI II V I IV I V I

2.39.1

E-7($\frac{13}{9}$) A7 $\frac{13}{9}$ D Δ $\frac{13}{9}$

8^{va}

2.39.2

D- Δ (9) E \emptyset b9 F Δ 9 G-7(9) A7b9 Bb Δ 9 C# \emptyset D- Δ (9)

I II III IV V VI VII I

2.41.1

Bb Δ 9 E \emptyset b9 A7b9 D- Δ (9) G-7(9) D- Δ (9) A7b9 D- Δ (9)

VI II V I IV I V I

2.41.2

$E\emptyset(11b6)$ A^{7b13}_{b9} $D-\Delta^9_{11}$

8va

2.42.1

Heel, half, heel, ...

half, heel, half, ...

2.44.1

$D7b10b9\#11$

2.45.1 / 2.47.2

D° E^7 Bb^7 G^7 $C\#^7$

tritonus tritonus

Notenmateriaal: D E F G Ab Bb B C# (heel half heel half, etc.)

2.45.2

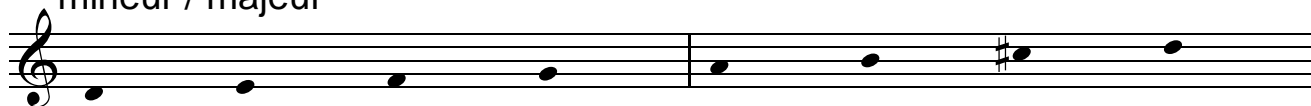
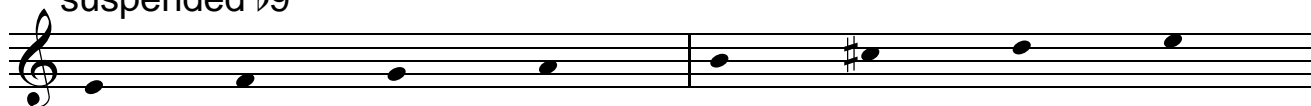
E^{-9} Bb^{-9} Eb^{13} $D\Delta^9$

8va

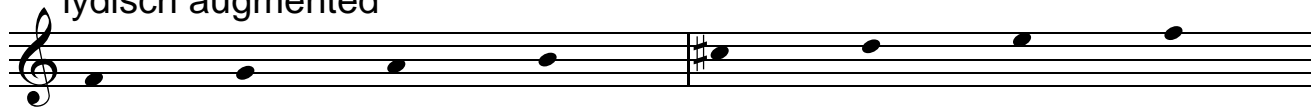
A^{13}

2.47.1

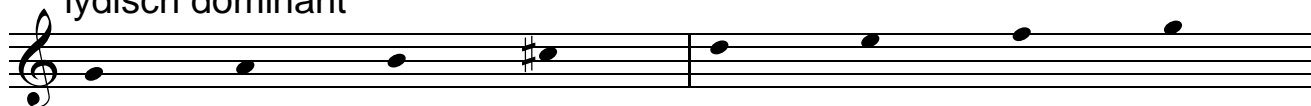
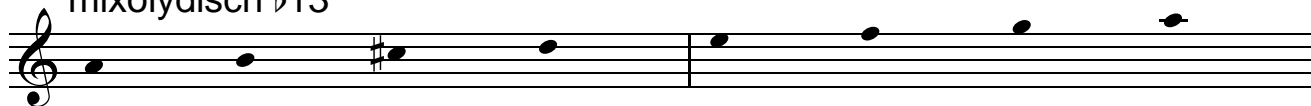
mineur / majeur

I
D- Δ (9)suspended $\flat 9$ II
E7($\flat 9$ sus4)

lydisch augmented

III
F Δ 7(9 $\sharp 5$ $\sharp 11$)

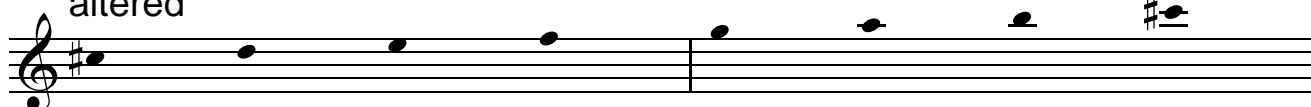
lydisch dominant

IV
G7 $\sharp 11$ ₉mixolydisch $\flat 13$ V
A7 $\flat 13$ ₉

half diminished

VI
B \emptyset 9 $\flat 6$

altered

VII
C \sharp 7alt

2.51.1

B⁷alt E[∅] A⁷alt D-^Δ

= VIIe trap, dus C mel.min. = VIe trap, dus G mel.min. = VIIe trap, dus Bb mel.min. = Ie trap, dus D mel.min.

B⁷b13 E⁷sus⁴b⁹b¹⁰ A⁷b13 D-^Δ

= Ve trap, dus E mel.min. = IIe trap, dus D mel.min. = Ve trap, dus D mel.min. = Ie trap, dus D mel.min.

2.53.1

C-⁷ F⁷ G^Δ B^b7

majeur pentatonisch op b7 majeur pentatonisch op 1 majeur pentatonisch op 5 majeur pentatonisch op 1

2.55.1

A D^Δ#11 /: F[#]7(13b10b9#11) /:

= lydisch majeur = IVe trap majeur, dus A majeur = octatonisch half-heel-half op F#

B⁷#11 3 /: E-7(11) /:

= lydisch dominant = IVe trap mel.min., dus F# mel.min. = dorisch = IIe trap majeur, dus D majeur

F[#]7(b9b10b13#11) /: B[∅] /:

= altered = VIIe trap mel.min., dus G mel.min. = halfdiminished = VIe trap mel.min., dus D mel.min.

E7(13#11) /: E-7(13) A⁷sus⁴_{b9}b¹⁰

= lydisch dominant = IVe trap mel.min., dus B mel.min. = dorisch = IIe trap majeur, dus D majeur = suspended b9 = IIe trap mel.min., dus G mel.min.

2.58.1

E-7(11)

C Δ ¹³₉

G \flat ₉

A⁹sus⁴

F Δ ¹³₉

E-7(¹³₁₁)

A⁷sus⁴(add3)

E-7(¹³₁₁)

A⁷sus⁴(add3)

G Δ ¹¹₉

G \sharp 7¹³₁₁

D⁷alt

D7¹³₁₁

G \sharp 7alt

A- Δ 7(\flat ₆)₉

2.61.1

D \flat ₆

E-7(¹¹₉)

G Δ ¹³

A⁷sus⁴(¹³₉)

B-7(11)

C Δ ¹³₉

G \sharp 7alt

D⁷alt

F \sharp Δ ¹³₉

E \flat - \flat ₆₉

F⁷sus⁴ \flat ₉

G \sharp 7(¹³₉)

2.62.1

2.64.1

upper structure:

2.66.1

E-¹³_{8va}

A⁷alt.

D Δ ¹³(\sharp ₁₁)

E-¹³

A¹³(\sharp ₁₁)

D Δ ¹³

2.67.1

US \flat VI

US II

US II

SW met
verdubbeling

E₋₁₁ A¹³(b₉) D_Δ¹³ E⁻⁹ A¹³([#]₁₁) D_Δ¹³

8^{va}

SW US VI US #IV mineur Kwartstapeling (met grondtoon)

2.67.2

E^b/D E/D F/D F[#]/D G/D G[#]/D A/D B^b/D B/D C/D C[#]/D

8^{va}

E^bΔ D^Δ#₁₁ D⁻⁷ D^Δ#₅ G⁷ D⁷alt D^Δ D⁻⁷b₆ D⁷b₉ D⁷sus⁴ D^{o7}

E^bΔ[#]₁₁ D⁷#₁₁ E⁷ G^{6/9} G G[#]Δ[#]₁₁ D⁷b₉ D^Δ#₁₁ B^bΔ D⁷alt

2.67.3

F/G F[#]/C

8^{va}

G⁻⁷ C⁷b₉#₁₁ F⁶

2.68.1

8^{va}

F/D E^b/F F/E^b A^b/F[#] G⁻⁷(11)

D⁻⁷ F⁷sus⁴ E^b6⁹#₁₁ F[#]6⁹#₁₁

2.69.1

B^bΔ G⁷

3

2.73.1

C⁷

3

2.74.1

C⁷

C⁷ A⁷

2.75.1

D⁷ G⁷ A^Δ

2.75.2

E⁻⁷ F⁷ B^bΔ C^{#7} F[#]Δ A⁷ D^Δ

II ↑ 1/2 ↑ R4 ↑ K3 ↑ R4 ↑ K3 ↑ R4

Of:

D^Δ F⁷ B^bΔ C^{#7} F[#]Δ A⁷ D^Δ

I ↑ K3 ↑ R4 ↑ K3 ↑ R4 ↑ K3 ↑ R4

(R4 = reine kwart, K3 = kleine terts)

2.76.1

C[#]Δ E⁷ A^Δ C⁷ F^Δ

B⁻⁷ E⁷ A^Δ C⁷ F^Δ G^{#7}

2.77.1

C[#]Δ E⁷ A^Δ C⁷ F^Δ B⁻⁷ E⁷

A^Δ C⁷ F^Δ G^{#7} C[#]Δ G⁻⁷ C⁷

F Δ B $^{-7}$ E 7 A Δ D $\#^{-7}$ G $\#^7$

14.7

C $\#\Delta$ G $^{-7}$ C 7 F Δ D $\#^{-7}$ G $\#^7$

2.78.1

F G A B C D E F

2.81.1

D $\#\Delta^5$ E $\emptyset^{(11)}$ F $\#\Delta^7\flat^{13}\#\Delta^9$ G $^{-}\Delta^{(\#\Delta^11)}$ G $\Delta^{\#\Delta^11}\#\Delta^9$ A $^7\flat^9$ B $\flat\Delta^{(\#\Delta^11)\#\Delta^5}$ C $\#\Delta^o$

I II III 7 IV $^{-}$ IV V \flat VI VII

2.81.2

D $^+$

1 #2 3 5 #5 7

E $\#\Delta^+$

6 tonen symmetrie

2.83.1

I II IV $\#\Delta^IV$

D $\#\Delta^5$ E \emptyset G $\#\Delta^{\#\Delta^11}\#\Delta^9$ G $\#\Delta^{\emptyset}$

\flat VI VI VII

B \flat^7 alt B $^{-}\Delta$ C $\#\Delta^{13}$ sus $^4\flat^9$

2.84.1



2.85.1

D⁹(#11)₅ E⁹(#11)₅ F#⁹(#11)₅ G#⁹(#11)₅ A#⁹(#11)₅ B#⁹(#11)₅

2.85.2

D^A B⁷ E^{-.7} A⁷

inside outside C outside G(?) inside outside Ab inside

2.87.1

D^A B⁷ E^{-.7} A⁷

outside C# outside E outside Ab outside Eb

2.87.2

Coltrane Changes: D⁻⁷ E^{b7} A^{bA} B⁷ E^A G⁷ C^A G⁷

Original chords: D⁻⁷ G⁷ C^A D⁻⁷ G⁷

2.88.1

alternative chords:

B^{b-7} E^{b7} A^{bA} D^A

tritonus

II V I

2.89.1

D⁻⁶ G^{7b9} C^A

2.89.2

D⁷⁽⁹⁾ G⁷⁽⁹⁾ C⁷⁽⁹⁾ F⁷⁽⁹⁾ B^{b7(9)} E^{b7(9)}

etc. langs gehele kwintencirkel

2.94.1

D⁷⁽⁹⁾ G⁷⁽⁹⁾ C⁷⁽⁹⁾ F⁷⁽⁹⁾ B^{b7(9)} E^{b7(9)}

etc. langs gehele kwintencirkel

2.94.2

E⁻⁷ A⁷ D⁻⁷ G⁷ C⁻⁷ F⁷ B^{b-7} E^{b7} etc

Ladder: D majeur C majeur B^b majeur A^b majeur

E⁻⁷ A⁷ D⁻⁷ G⁷ C⁻⁷ F⁷ B^{b-7} E^{b7} etc

Ladder: D majeur C majeur B^b majeur A^b majeur

2.99.1

B^{7#11} E^ø A^{7alt} D^{-Δ}

Ladder: F[#] mel.min. G mel.min. B^b mel.min. D mel.min.

B^{7#11} E^ø

A^{7alt} D^{-Δ}

2.99.2

F^{#ø} B^{7b9}

Ladder: A mel.min. B oct. half-heel

D-7 G7#11 C^Δ

C majeur D mel.min.

2.100.1

I
IV } melodisch mineur
VI }
VII

D-6 8^{va}

idem

2.100.2

D-6 D7b10

2.101.1

II
III fryg } majeur
IV⁶ }
V }
VII

E-6

2.101.2

B-6 D Δ #11 (I-lyd)



2.102.1

D7b10b9#11 D7b10b9#11



Kleine tertsen Kleine tertsen

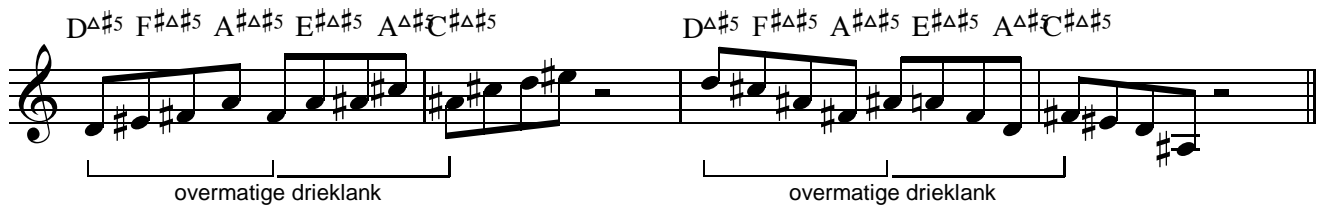
Kleine tertsen Kleine tertsen

Kleine tertsen Kleine tertsen

Kleine tertsen

2.103.1

D Δ #5 F# Δ #5 A# Δ #5 E# Δ #5 A# Δ #C# Δ #5 D Δ #5 F# Δ #5 A# Δ #5 E# Δ #5 A# Δ #C# Δ #5

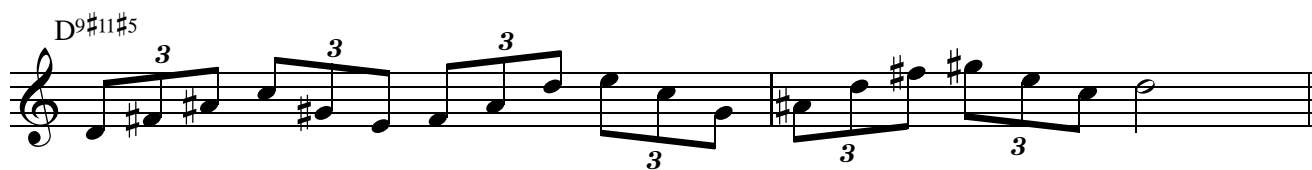
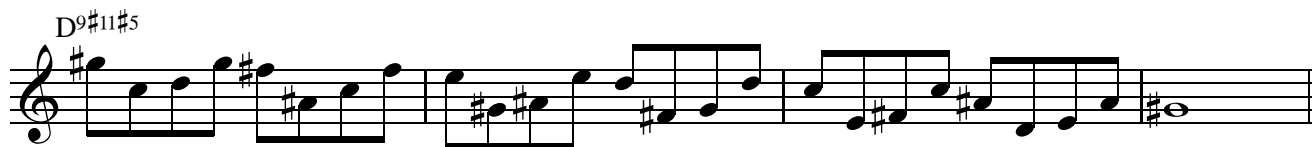


overmatige drieklank overmatige drieklank

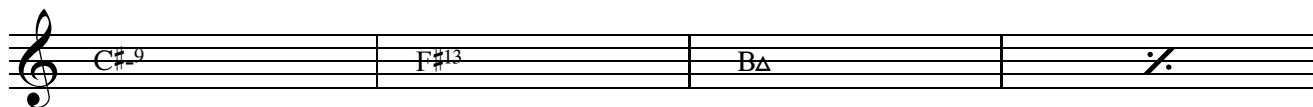
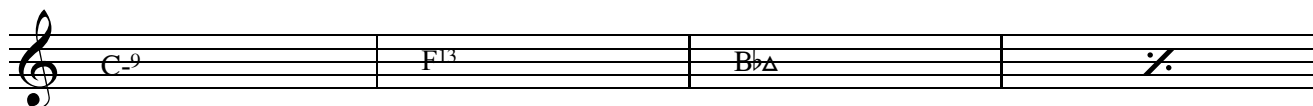
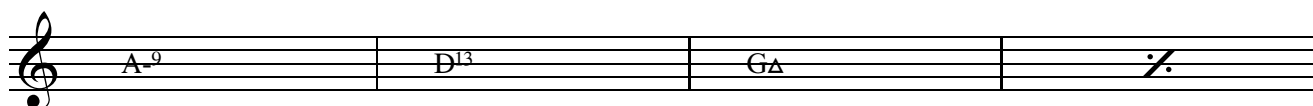
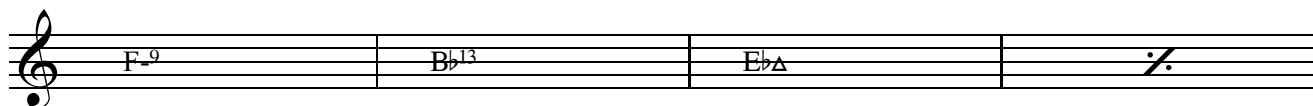
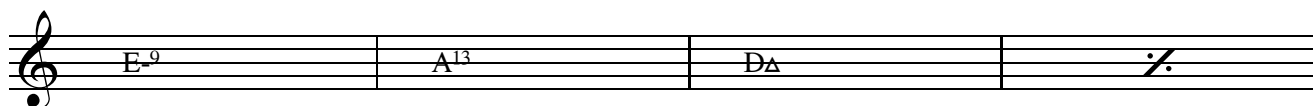
2.104.1

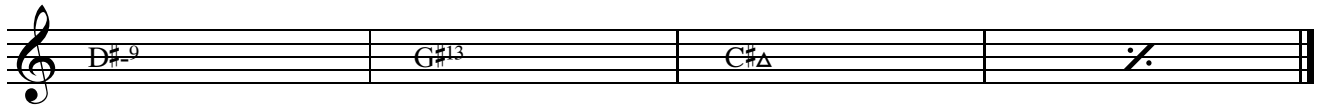
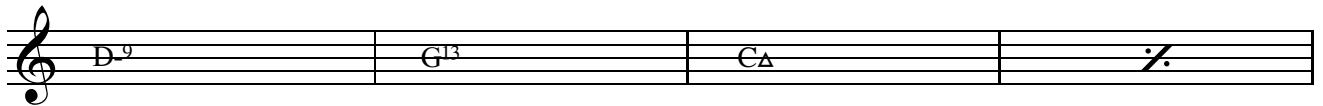
D9#11#5



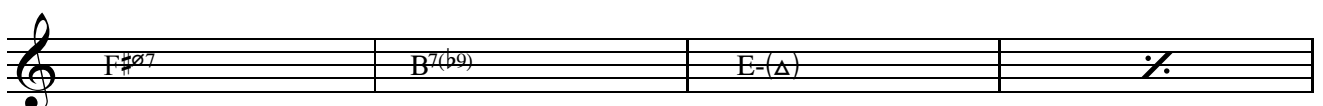
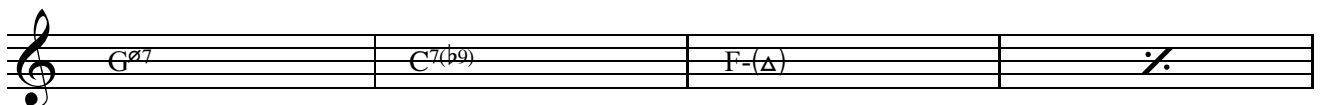
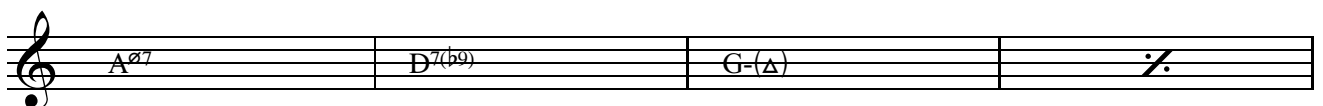
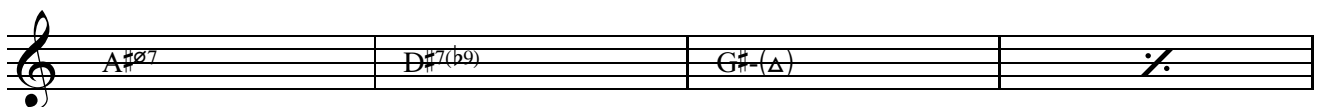
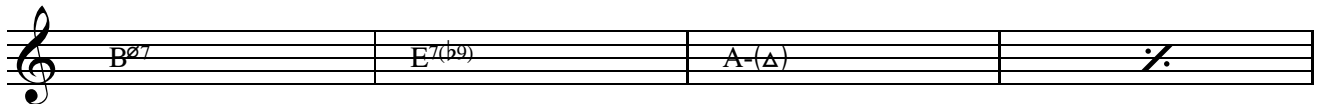
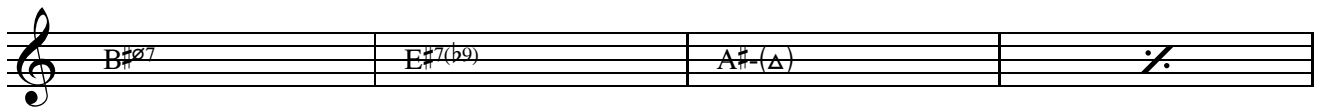
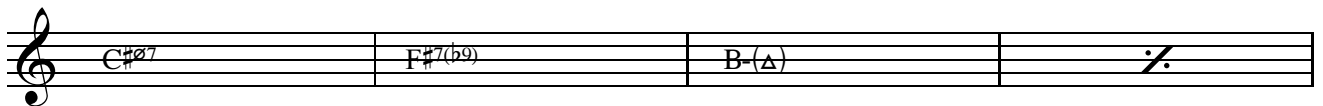
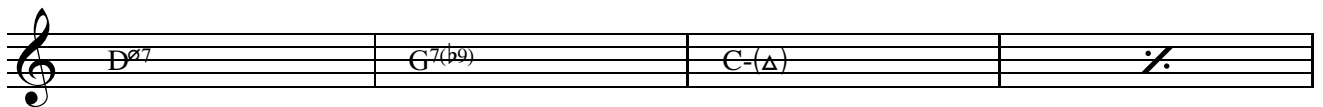
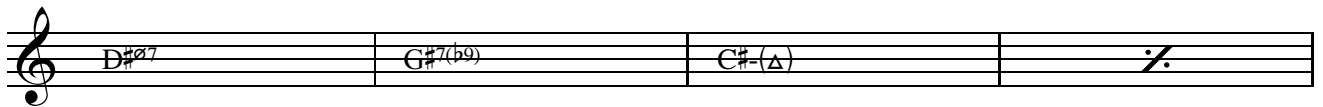
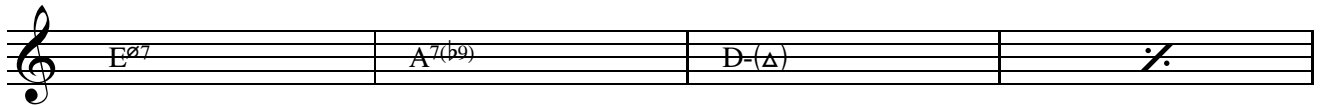


2.104.2





2.106.1



Musical staff with four measures. The first measure contains the chord E#7. The second measure contains the chord A#7(b9). The third measure contains the chord D#-(Δ). The fourth measure contains a double bar line with repeat dots.

2.107.1

Musical staff with three measures. The first measure contains the chord E-7. The second measure contains a double bar line with repeat dots. The third measure contains a double bar line with a '2' above it and repeat dots.

Musical staff with four measures. The first measure contains the chord E-7. The second and third measures contain double bar lines with repeat dots. The fourth measure contains the chord D7alt.

Musical staff with three measures. The first measure contains the chord G-7. The second measure contains a double bar line with repeat dots. The third measure contains a double bar line with a '2' above it and repeat dots.

Musical staff with four measures. The first measure contains the chord G-7. The second and third measures contain double bar lines with repeat dots. The fourth measure contains the chord F7alt.

Musical staff with three measures. The first measure contains the chord Bb-7. The second measure contains a double bar line with repeat dots. The third measure contains a double bar line with a '2' above it and repeat dots.

Musical staff with four measures. The first measure contains the chord Bb-7. The second and third measures contain double bar lines with repeat dots. The fourth measure contains the chord G#7alt.

Musical staff with three measures. The first measure contains the chord C#-7. The second measure contains a double bar line with repeat dots. The third measure contains a double bar line with a '2' above it and repeat dots.

Musical staff with three measures. The first measure contains the chord C#-7. The second measure contains a double bar line with repeat dots. The third measure contains a double bar line with a '2' above it and repeat dots.

2.108.1

Musical staff with three measures. The first measure contains the chord F-7. The second measure contains a double bar line with repeat dots. The third measure contains a double bar line with a '2' above it and repeat dots.

Musical staff with four measures. The first measure contains the chord F-7. The second and third measures contain double bar lines with repeat dots. The fourth measure contains the chord D#7alt.

Musical staff with three measures. The first measure contains the chord G#-7. The second measure contains a double bar line with repeat dots. The third measure contains a double bar line with a '2' above it and repeat dots.

G#⁻⁷ /: /: F#⁷alt.
 B⁻⁷ /: /:
 B⁻⁷ /: /: A⁷alt.
 D⁻⁷ /: /:
 D⁻⁷ /: /:

2.109.1

F#⁻⁷ /: /:
 F#⁻⁷ /: /: E⁷alt.
 A⁻⁷ /: /:
 A⁻⁷ /: /: G⁷alt.
 C⁻⁷ /: /:
 C⁻⁷ /: /: A#⁷alt.
 D#⁻⁷ /: /:
 D#⁻⁷ /: /:

2.110.1

| | | | | | | | |
|-------------|------------|-----------------|-------|----------------------|-----------------------|-------------|--|
| D^{-7} | $\%:$ | G^{-7} | $\%:$ | $E^{\emptyset 7}$ | $A^{7(b13)}_{\#9}$ | D^{-7} | $\%:$ |
| F^{-7} | Bb^{-7} | Eb_{Δ} | $\%:$ | $E^{\emptyset 7}$ | $A^{7(b9)}$ | D^{-7} | $C^{\# \emptyset 7} F^{\# 7(b13)}_{\#9}$ |
| B^{-7} | $\%:$ | E^{-7} | $\%:$ | $C^{\# \emptyset 7}$ | $F^{\# 7(b13)}_{\#9}$ | B^{-7} | $\%:$ |
| D^{-7} | G^7 | C_{Δ} | $\%:$ | $C^{\# \emptyset 7}$ | $F^{\# 7(b9)}$ | B^{-7} | $A^{\# \emptyset 7} D^{\# 7(b13)}_{\#9}$ |
| $G^{\# -7}$ | $\%:$ | $C^{\# -7}$ | $\%:$ | $A^{\# \emptyset 7}$ | $D^{\# 7(b13)}_{\#9}$ | $G^{\# -7}$ | $\%:$ |
| B^{-7} | E^7 | A_{Δ} | $\%:$ | $A^{\# \emptyset 7}$ | $D^{\# 7(b9)}$ | $G^{\# -7}$ | $G^{\emptyset 7} C^{7(b13)}_{\#9}$ |
| F^{-7} | $\%:$ | Bb^{-7} | $\%:$ | $G^{\emptyset 7}$ | $C^{7(b13)}_{\#9}$ | F^{-7} | $\%:$ |
| $G^{\# -7}$ | $C^{\# 7}$ | $F^{\# \Delta}$ | $\%:$ | $G^{\emptyset 7}$ | $C^{7(b9)}$ | F^{-7} | $E^{\emptyset 7} A^{7(b13)}_{\#9}$ |
| | | | | | | | D^{-7} |

2.111.1

| | | | | | | | |
|-------------|------------|--------------|-------|----------------------|-----------------------|-------------|--|
| $C^{\# -7}$ | $\%:$ | $F^{\# -7}$ | $\%:$ | $D^{\# \emptyset 7}$ | $G^{\# 7(b13)}_{\#9}$ | $C^{\# -7}$ | $\%:$ |
| E^{-7} | A^7 | D_{Δ} | $\%:$ | $D^{\# \emptyset 7}$ | $G^{\# 7(b9)}$ | $C^{\# -7}$ | $B^{\# \emptyset 7} E^{\# 7(b13)}_{\#9}$ |
| $A^{\# -7}$ | $\%:$ | $D^{\# -7}$ | $\%:$ | $B^{\# \emptyset 7}$ | $E^{\# 7(b13)}_{\#9}$ | $A^{\# -7}$ | $\%:$ |
| $C^{\# -7}$ | $F^{\# 7}$ | B_{Δ} | $\%:$ | $B^{\# \emptyset 7}$ | $E^{\# 7(b9)}$ | $A^{\# -7}$ | $A^{\emptyset 7} D^b_{13(\#9)}$ |

G⁻⁷ C⁻⁷ A^{ø7} D^{7(b13)(#9)} G⁻⁷
 A^{#-7} D^{#7} G^{#Δ} A^{ø7} D^{7(b9)} G⁻⁷ F^{#ø7} B^{7(b13)(#9)}
 E⁻⁷ A⁻⁷ F^{#ø7} B^{7(b13)(#9)} E⁻⁷
 G⁻⁷ C⁷ F^Δ F^{#ø7} B^{7(b9)} E⁻⁷ D^{#ø7} G^{#7(b13)(#9)} C^{#-7}

2.112.1

♩ = 143

C⁻⁷ F⁻⁷ D^{ø7} G^{7(b13)(#9)} C⁻⁷
 D^{#-7} G^{#7} C^{#Δ} D^{ø7} G^{7(b9)} C⁻⁷ B^{ø7}
 E^{7(b13)(#9)} A⁻⁷ D⁻⁷ B^{ø7} E^{7(b13)(#9)} A⁻⁷
 C⁻⁷ F⁷ B^{bΔ} B^{ø7} E^{7(b9)} A⁻⁷ G^{#ø7}
 C^{#13(#9)} F^{#-7} B⁻⁷ G^{#ø7} C^{#7(b13)(#9)} F^{#-7}
 A⁻⁷ D⁷ G^Δ G^{#ø7} C^{#7(b9)} F^{#-7} E^{#ø7}
 A^{#7(b13)(#9)} D^{#-7} G^{#-7} E^{#ø7} A^{#7(b13)(#9)} D^{#-7}
 F^{#-7} B⁷ E^Δ E^{#ø7} A^{#7(b9)} D^{#-7} D^{ø7} G^{7(b13)(#9)} C⁻⁷

2.113.1

C Δ $\text{B}^{\flat 7}$ E 7 alt.

A $^{-7}$ D 7 G $^{-7}$ C 7

F Δ F^{-7} B $^{\flat 7}$

E $^{\flat}\Delta$ $\text{D}^{\#-7}$ G $^{\#7}$

C $^{\#\Delta}$ $\text{D}^{\flat 7}$ G 7

E $^{-9}$ E $^{\flat 9}$ $\text{D}^{\flat 7}$ C $^{\#13}$

F $^{\#\Delta}$ $\text{E}^{\# \flat 7}$ A $^{\#7}$ alt.

D $^{\#-7}$ G $^{\#7}$ C $^{\#-7}$ F $^{\#7}$

B Δ B^{-7} E 7

A Δ A^{-7} D 7

G Δ $\text{G}^{\# \flat 7}$ C $^{\#7}$

A $^{\#-9}$ A 9 G $^{\# \flat 7}$ G 13 C Δ

C[#]_Δ E⁷ | A_Δ C⁷ | F_Δ B⁻⁷ E⁷ |
 A_Δ C⁷ | F_Δ G^{#7} | C[#]_Δ G⁻⁷ C⁷ |
 F_Δ B⁻⁷ E⁷ | A_Δ F^{#-7} B⁷ ||
 E_Δ G⁷ | C_Δ E^{b7} | A^b_Δ D⁻⁷ G⁷ |
 C_Δ E^{b7} | A^b_Δ B⁷ | E_Δ B^{b-7} E^{b7} |
 A^b_Δ D⁻⁷ G⁷ | C_Δ F⁻⁷ B^{b7} ||
 E^b_Δ F^{#7} | B_Δ D⁷ | G_Δ C^{#-7} F^{#7} |
 B_Δ D⁷ | G_Δ B^{b7} | E^b_Δ A⁻⁷ D⁷ |
 G_Δ C^{#-7} F^{#7} | B_Δ D^{#-7} G^{#7} | C[#]_Δ ||

2.115.1

D_Δ F⁷ | B^b_Δ C^{#7} | F[#]_Δ C⁻⁷ F⁷ |
 B^b_Δ C^{#7} | G^b_Δ A⁷ | D_Δ A^{b-7} C^{#7} |
 F[#]_Δ C⁻⁷ F⁷ | B^b_Δ G⁻⁷ C⁷ ||

Staff 1: F Δ Ab⁷ | C \sharp Δ E⁷ | A Δ | Eb⁷ Ab⁷ |
 Staff 2: C \sharp Δ E⁷ | A Δ C⁷ | F Δ | B⁷ E⁷ |
 Staff 3: A Δ | Eb⁷ Ab⁷ | C \sharp Δ | F \sharp ⁷ B⁷ ||
 Staff 4: E Δ G⁷ | C Δ Eb⁷ | Ab Δ | D⁷ G⁷ |
 Staff 5: C Δ Eb⁷ | Ab Δ B⁷ | E Δ | B \flat ⁷ Eb⁷ |
 Staff 6: Ab Δ | D⁷ G⁷ | C Δ | E⁷ A⁷ | D Δ ||

2.116.1

Staff 1: Eb Δ F \sharp ⁷ | B Δ D⁷ | G Δ | C \sharp ⁷ F \sharp ⁷ |
 Staff 2: B Δ D⁷ | G Δ B \flat ⁷ | Eb Δ | A⁷ D⁷ |
 Staff 3: G Δ | C \sharp ⁷ F \sharp ⁷ | B Δ | G \sharp ⁷ C \sharp ⁷ ||
 Staff 4: F \sharp Δ A⁷ | D Δ F⁷ | B \flat Δ | E⁷ A⁷ |
 Staff 5: D Δ F⁷ | B \flat Δ C \sharp ⁷ | F \sharp Δ | C⁷ F⁷ |
 Staff 6: B \flat Δ | E⁷ A⁷ | D Δ | G⁷ C⁷ ||
 Staff 7: F Δ G \sharp ⁷ | C \sharp Δ E⁷ | A Δ | D \sharp ⁷ G \sharp ⁷ |

The image displays two staves of musical notation, each containing a sequence of chords. The first staff begins with a treble clef and contains four measures of chords: C#Δ, E7, AΔ, and C7. The second staff also begins with a treble clef and contains five measures of chords: AΔ, D#-7, G#7, C#Δ, and F-7, Bb7, EbΔ. The notation uses standard chord symbols with accidentals and symbols for major, minor, and dominant qualities.

2.117.1